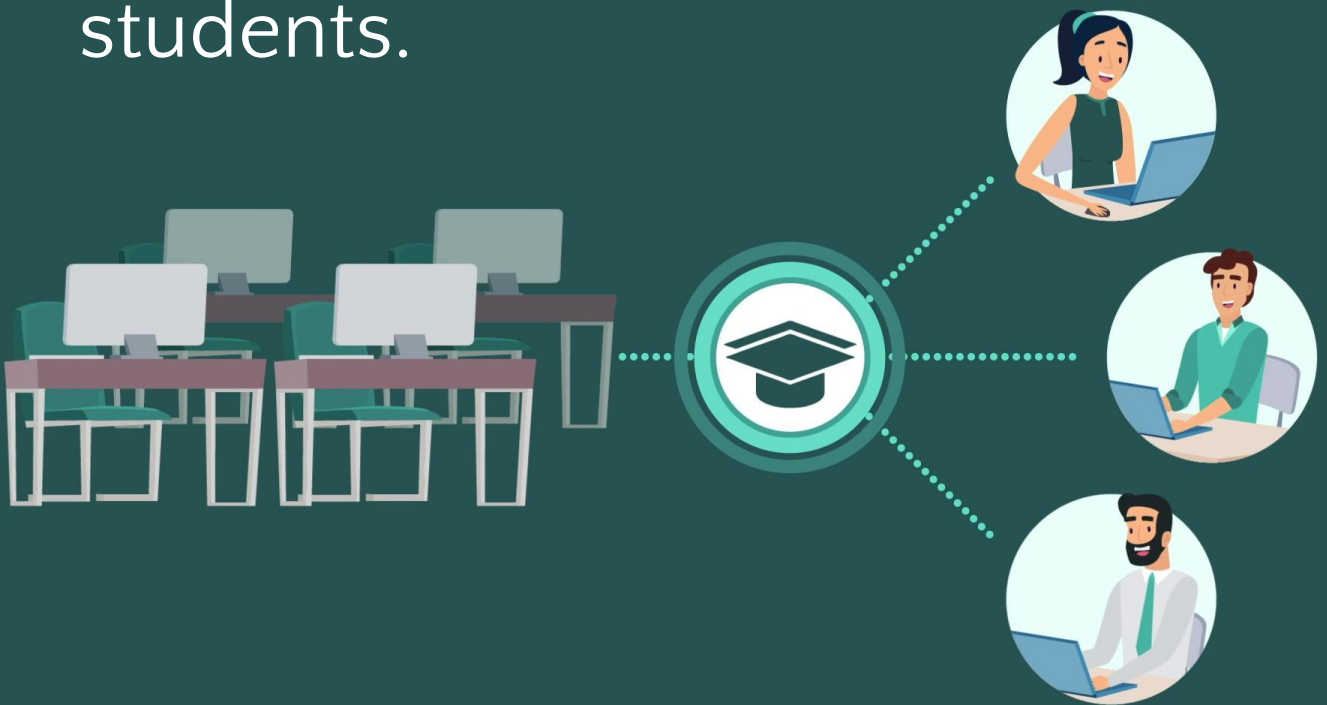


Secure and
efficient remote
access for your
students.



Use the Workstations and licenses you already
have to allow your students to work from
anywhere.

Offer new
services with full
control.



A single platform for managing the remote
access to on-campus labs or individual
devices, for single or recurring sessions.

Fast, easy, and
affordable.



No VPN



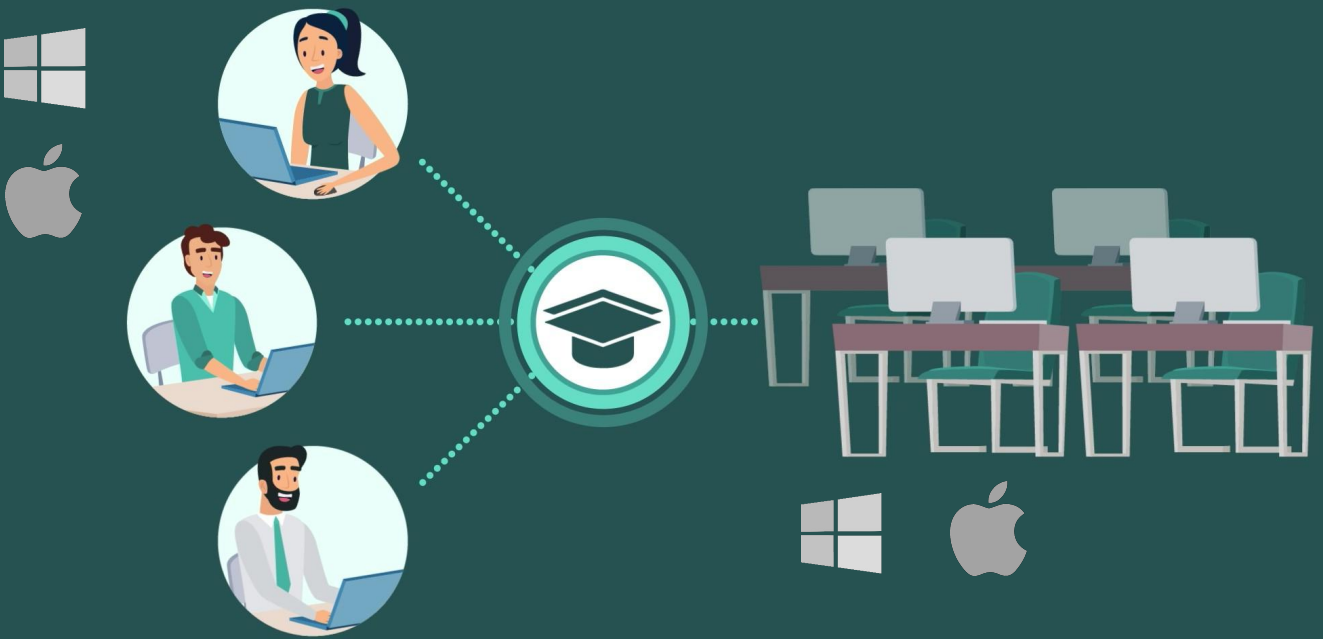
No expensive and
slow virtualized
desktops



No additional
bandwidth

You don't need expensive and complex virtualized desktop solutions, not even changes in your network, AnyClassroom enables the workstations you already have for remote access, 24x7.

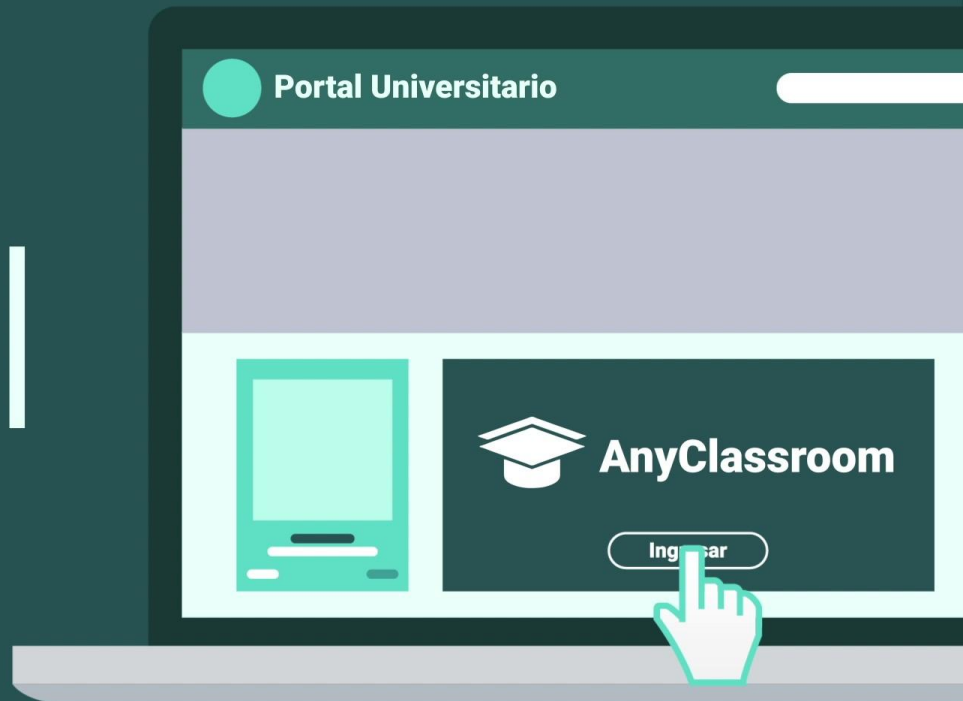
Compatible and convenient.



Your students can use Windows or Mac, devices to connect to your Windows or Mac Workstations.

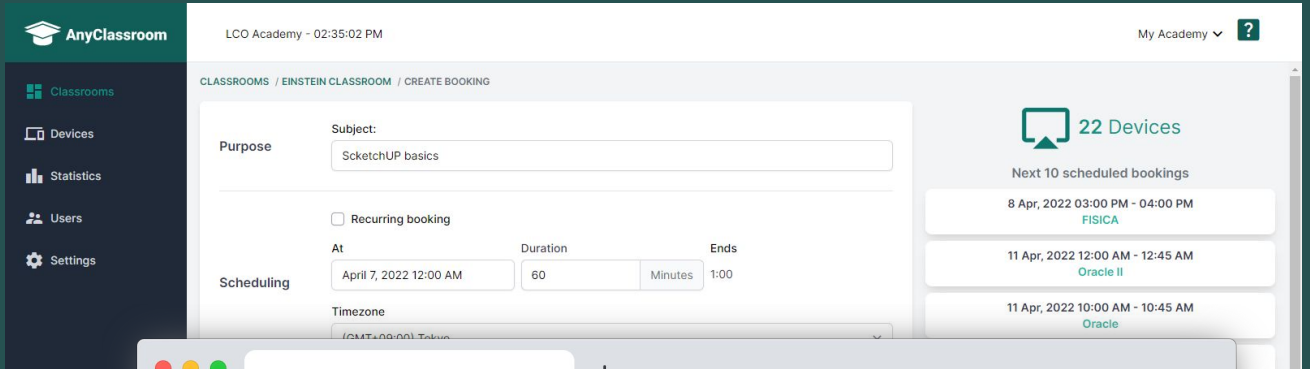
New powers for
your university
portal.

API



If you already have a resources booking app (e.g, auditorium or meeting room booking) you can connect with our API to manage the remote device booking too.

Main features Managed remote access



AnyClassroom LCO Academy - 02:35:02 PM My Academy ?

CLASSROOMS / EINSTEIN CLASSROOM / CREATE BOOKING

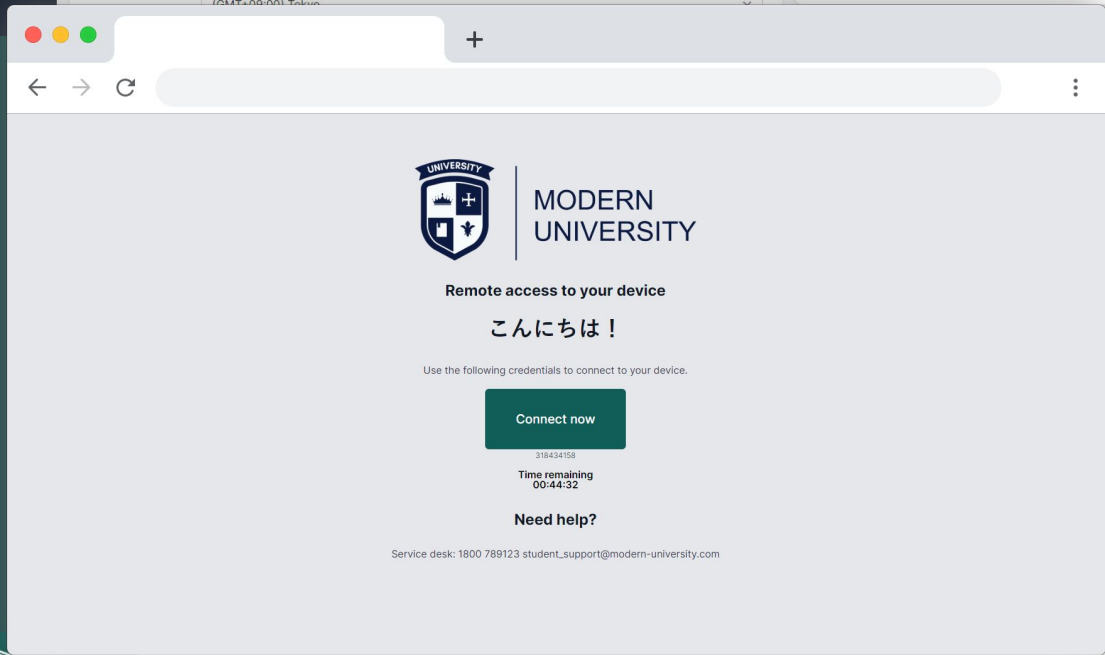
Purpose
Subject: SketchUP basics

Recurring booking

Scheduling
At: April 7, 2022 12:00 AM Duration: 60 Minutes Ends: 1:00
Timezone: (GMT+09:00) Tokyo

22 Devices
Next 10 scheduled bookings

- 8 Apr, 2022 03:00 PM - 04:00 PM FISICA
- 11 Apr, 2022 12:00 AM - 12:45 AM Oracle II
- 11 Apr, 2022 10:00 AM - 10:45 AM Oracle



UNIVERSITY MODERN UNIVERSITY

Remote access to your device

こんにちは!

Use the following credentials to connect to your device.

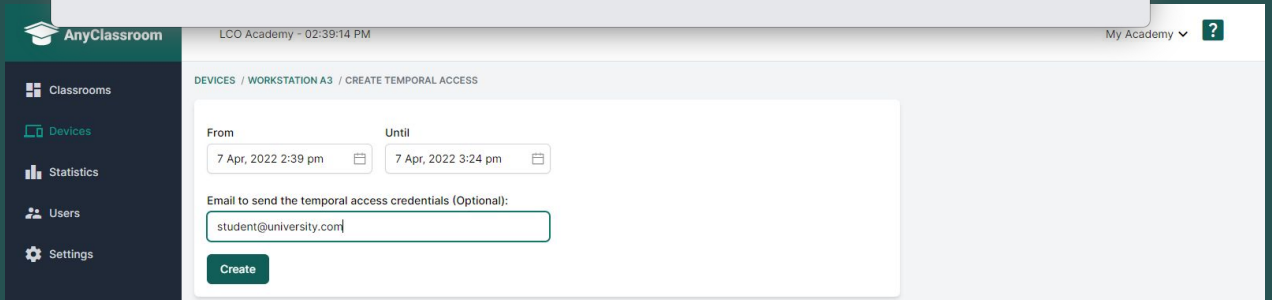
[Connect now](#)

318434158

Time remaining 00:44:32

Need help?

Service desk: 1800 789123 student_support@modern-university.com



AnyClassroom LCO Academy - 02:39:14 PM My Academy ?

DEVICES / WORKSTATION A3 / CREATE TEMPORAL ACCESS

From: 7 Apr, 2022 2:39 pm Until: 7 Apr, 2022 3:24 pm

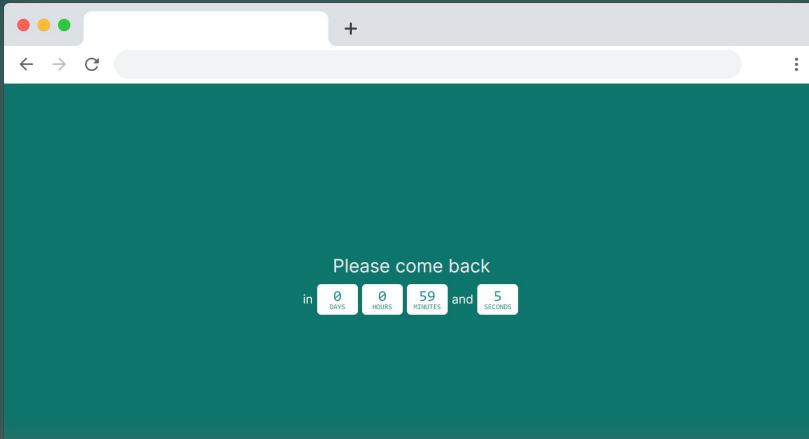
Email to send the temporal access credentials (Optional): student@university.com

[Create](#)

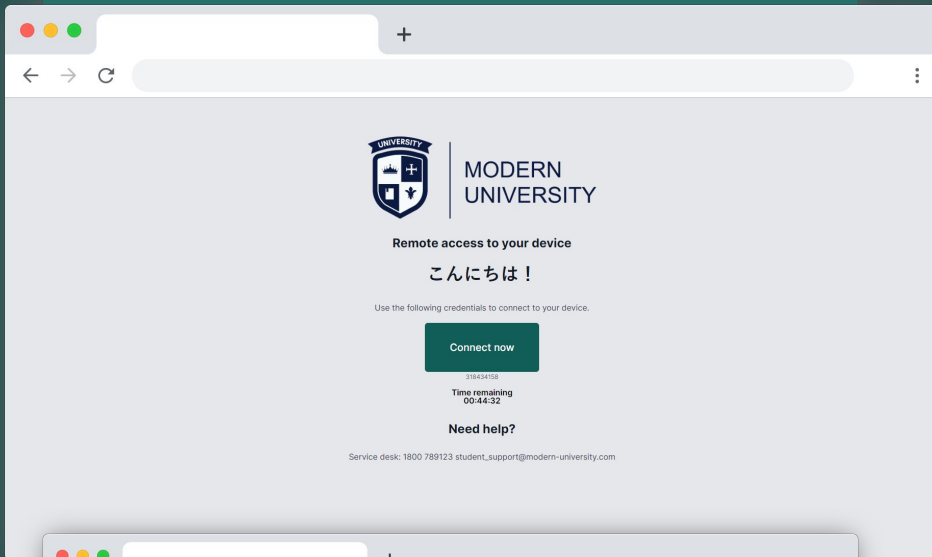
You can set when and for how long your students will connect.

Main features

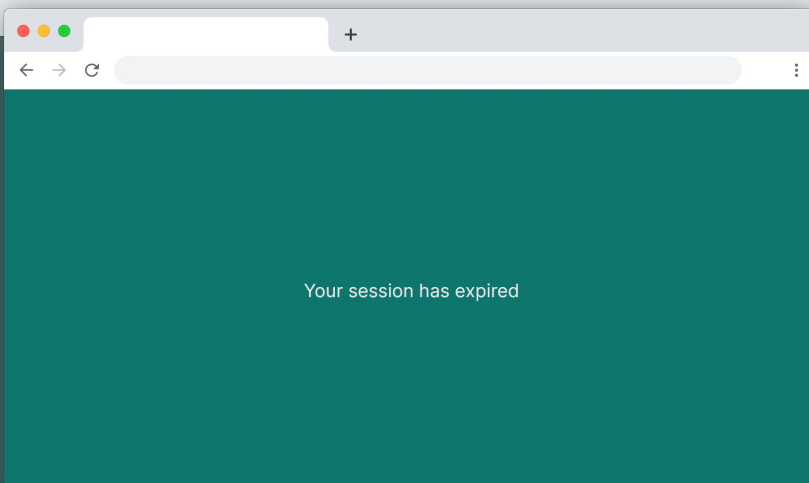
Managed remote access



Before the scheduled time, the student can't get connection credentials.



When the time slot starts, the student gets access to connect.

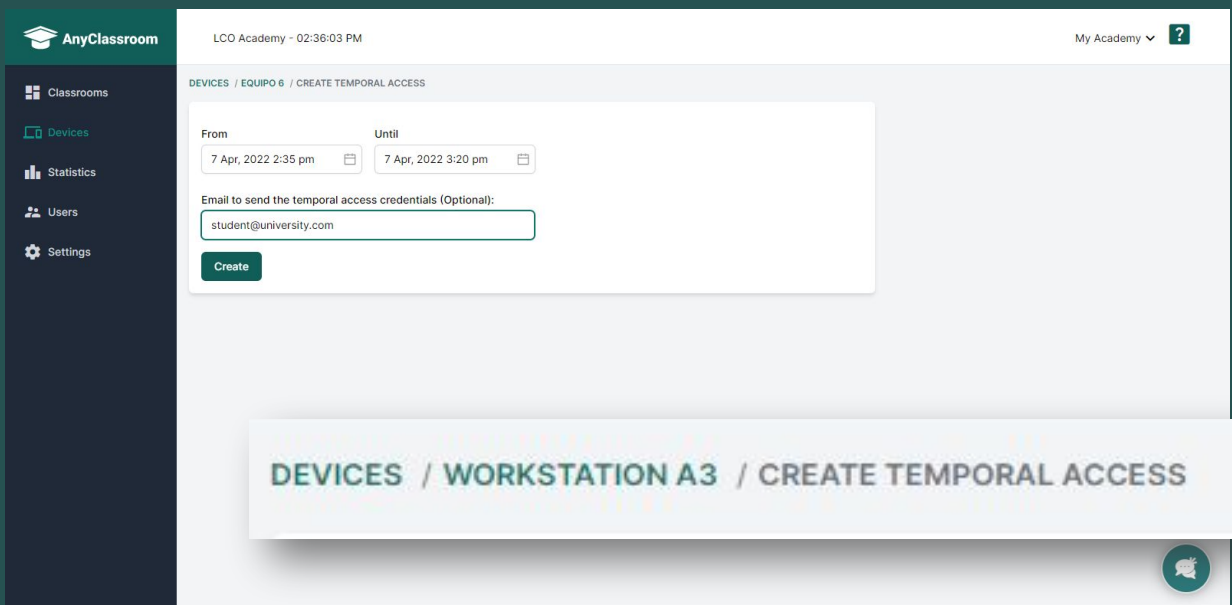
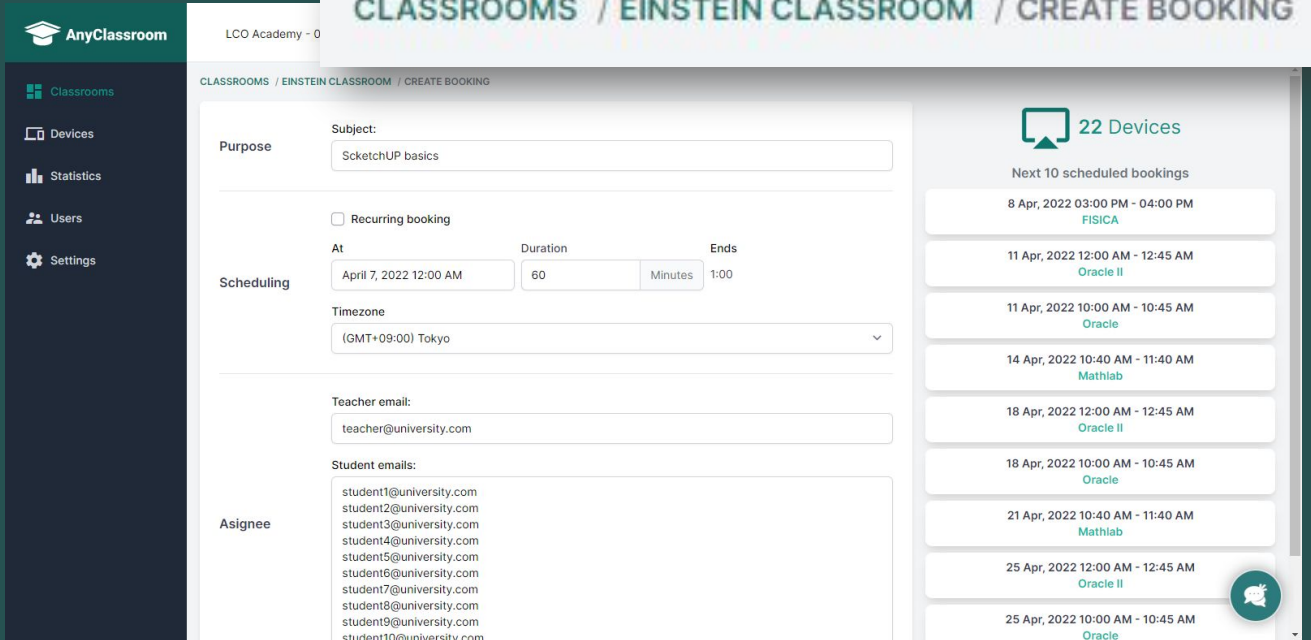


When time finishes, the connection is closed.

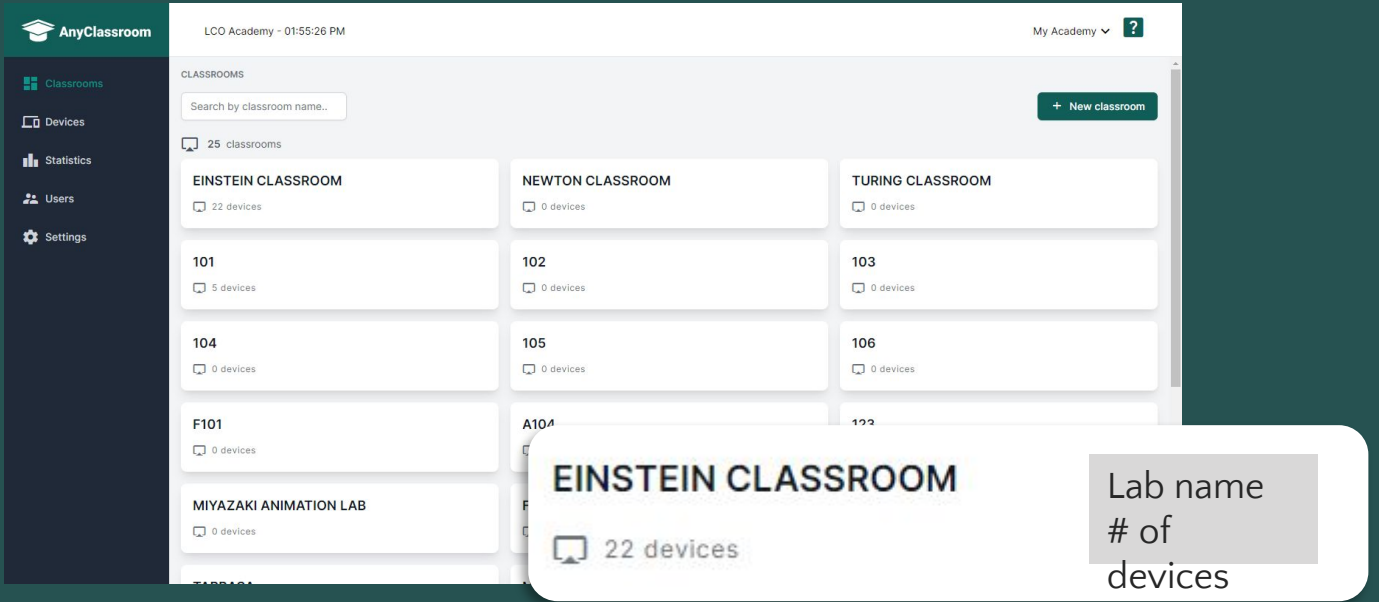
Main features

Group or individual access

CLASSROOMS / EINSTEIN CLASSROOM / CREATE BOOKING



You can book a whole lab or a single device.



CLASSROOMS

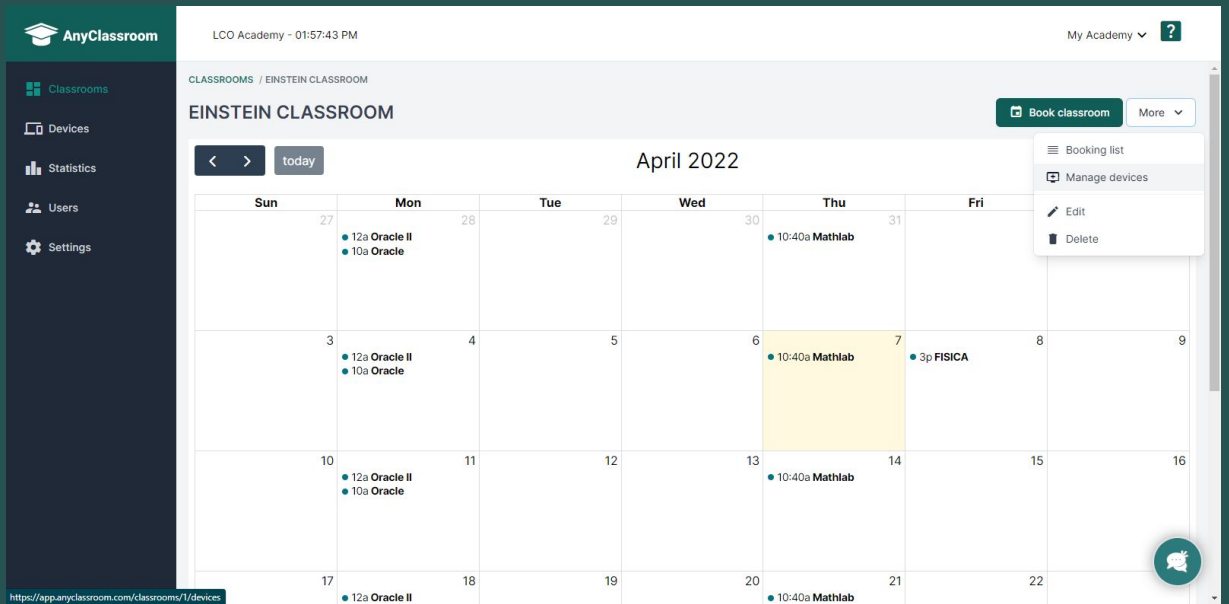
Search by classroom name.. + New classroom

25 classrooms

- EINSTEIN CLASSROOM (22 devices)
- NEWTON CLASSROOM (0 devices)
- TURING CLASSROOM (0 devices)
- 101 (5 devices)
- 102 (0 devices)
- 103 (0 devices)
- 104 (0 devices)
- 105 (0 devices)
- 106 (0 devices)
- F101 (0 devices)
- A104 (0 devices)
- 122 (0 devices)
- MIYAZAKI ANIMATION LAB (0 devices)

EINSTEIN CLASSROOM
22 devices

Lab name
of
devices



CLASSROOMS / EINSTEIN CLASSROOM

EINSTEIN CLASSROOM Book classroom More

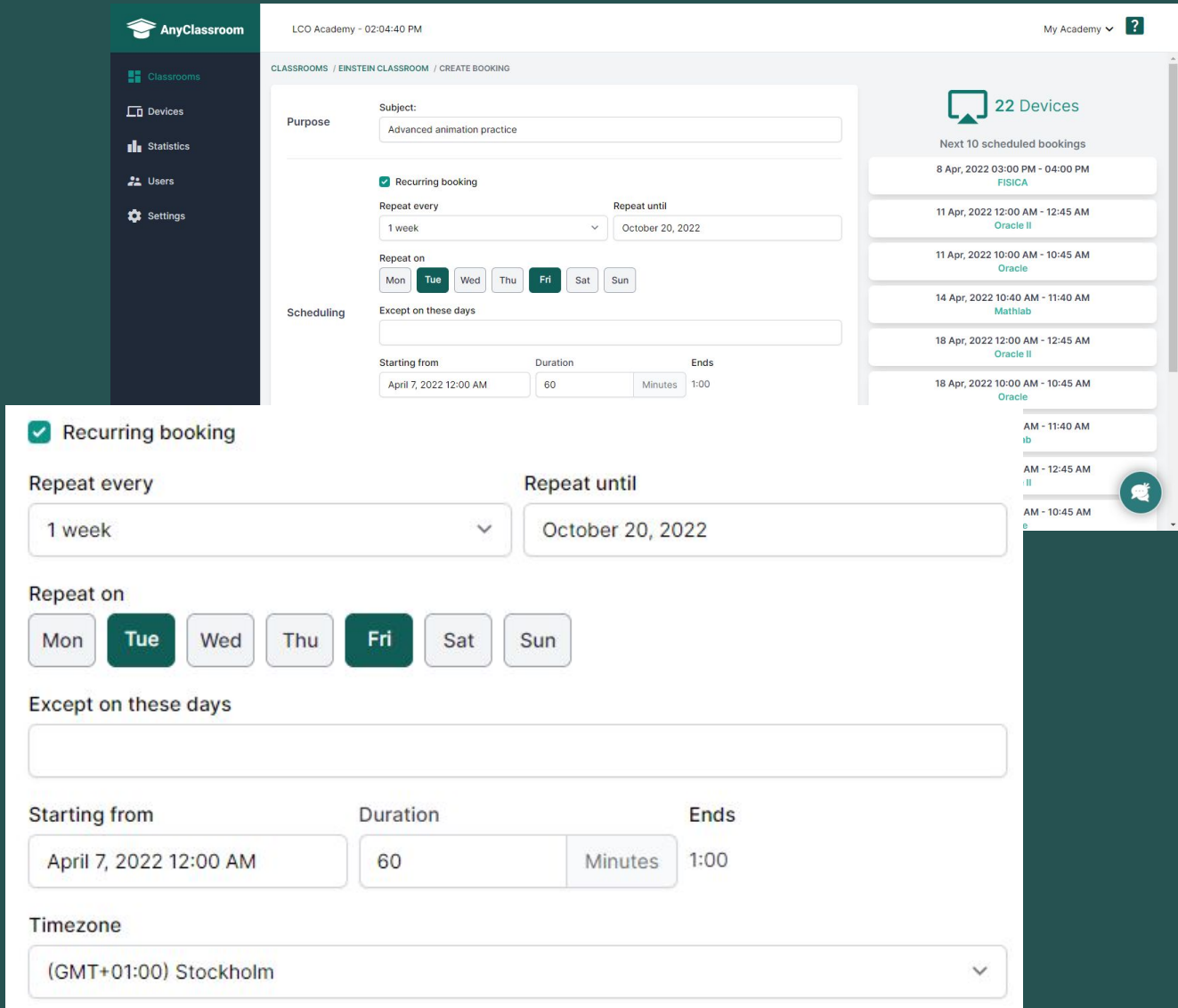
April 2022

Sun	Mon	Tue	Wed	Thu	Fri
27	28	29	30	31	
	<ul style="list-style-type: none"> 12a Oracle II 10a Oracle 			<ul style="list-style-type: none"> 10:40a Mathlab 	
3	4	5	6	7	8
	<ul style="list-style-type: none"> 12a Oracle II 10a Oracle 			<ul style="list-style-type: none"> 10:40a Mathlab 	<ul style="list-style-type: none"> 3p FISICA
10	11	12	13	14	15
	<ul style="list-style-type: none"> 12a Oracle II 10a Oracle 			<ul style="list-style-type: none"> 10:40a Mathlab 	
17	18	19	20	21	22
	<ul style="list-style-type: none"> 12a Oracle II 			<ul style="list-style-type: none"> 10:40a Mathlab 	

- Booking list
- Manage devices
- Edit
- Delete

<https://app.anyclassroom.com/classrooms/1/devices>

Grouping devices allow you to book the whole group (Lab) of devices for a group of students.



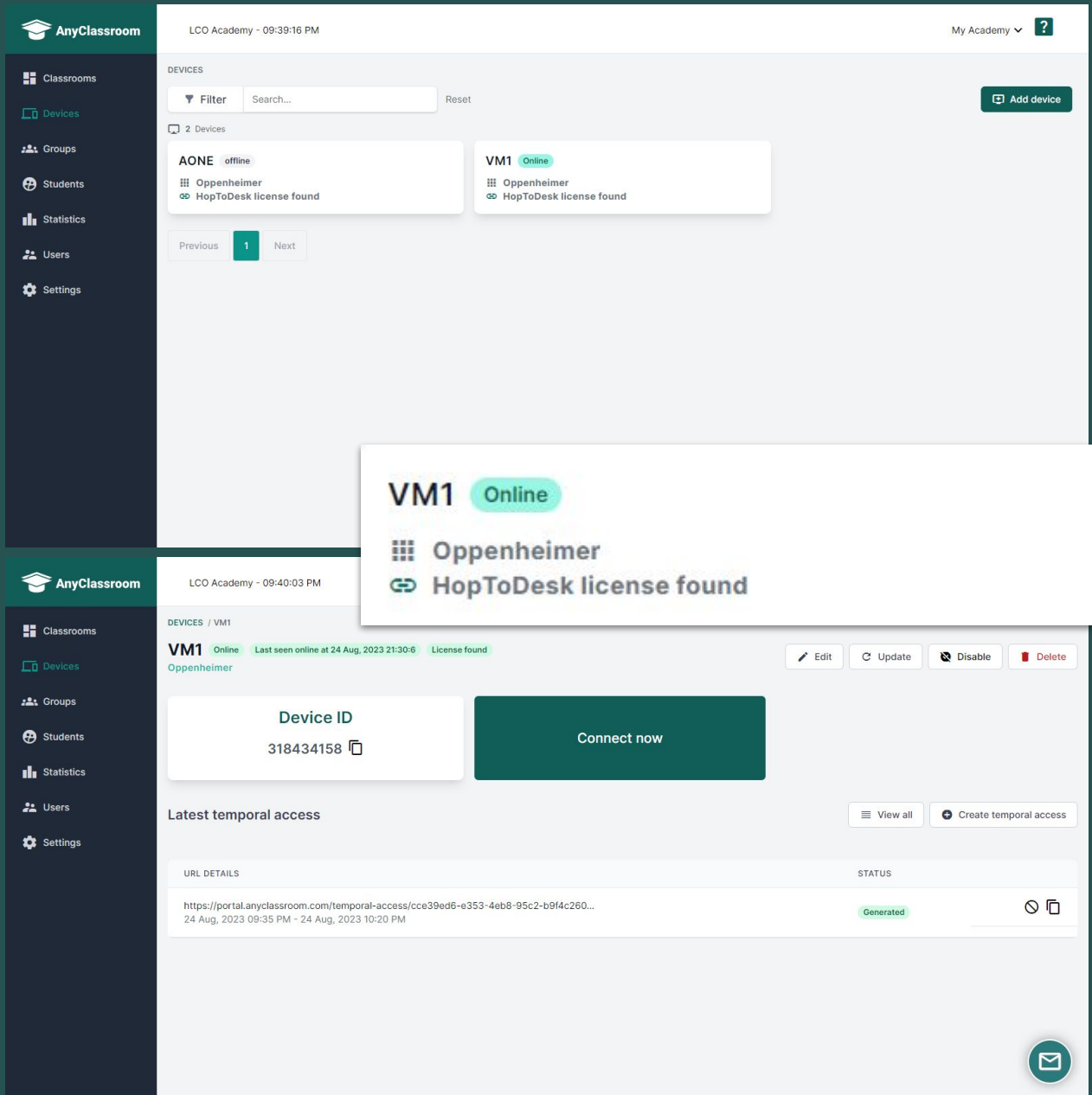
The screenshot displays the 'CREATE BOOKING' interface in AnyClassroom. The main form is titled 'CLASSROOMS / EINSTEIN CLASSROOM / CREATE BOOKING'. It includes a sidebar with navigation options: Classrooms, Devices, Statistics, Users, and Settings. The form fields are as follows:

- Purpose:** Advanced animation practice
- Subject:** (empty)
- Recurring booking:** Recurring booking
- Repeat every:** 1 week
- Repeat until:** October 20, 2022
- Repeat on:** Mon, **Tue**, Wed, Thu, **Fri**, Sat, Sun
- Scheduling:**
 - Except on these days:** (empty)
 - Starting from:** April 7, 2022 12:00 AM
 - Duration:** 60 Minutes
 - Ends:** 1:00
- Timezone:** (GMT+01:00) Stockholm

On the right sidebar, there are 22 Devices and a list of 'Next 10 scheduled bookings':

- 8 Apr, 2022 03:00 PM - 04:00 PM (FISICA)
- 11 Apr, 2022 12:00 AM - 12:45 AM (Oracle II)
- 11 Apr, 2022 10:00 AM - 10:45 AM (Oracle)
- 14 Apr, 2022 10:40 AM - 11:40 AM (Mathlab)
- 18 Apr, 2022 12:00 AM - 12:45 AM (Oracle II)
- 18 Apr, 2022 10:00 AM - 10:45 AM (Oracle)
- AM - 11:40 AM (ib)
- AM - 12:45 AM (II)
- AM - 10:45 AM (e)

If a course takes place each week, you can schedule it with a single booking.

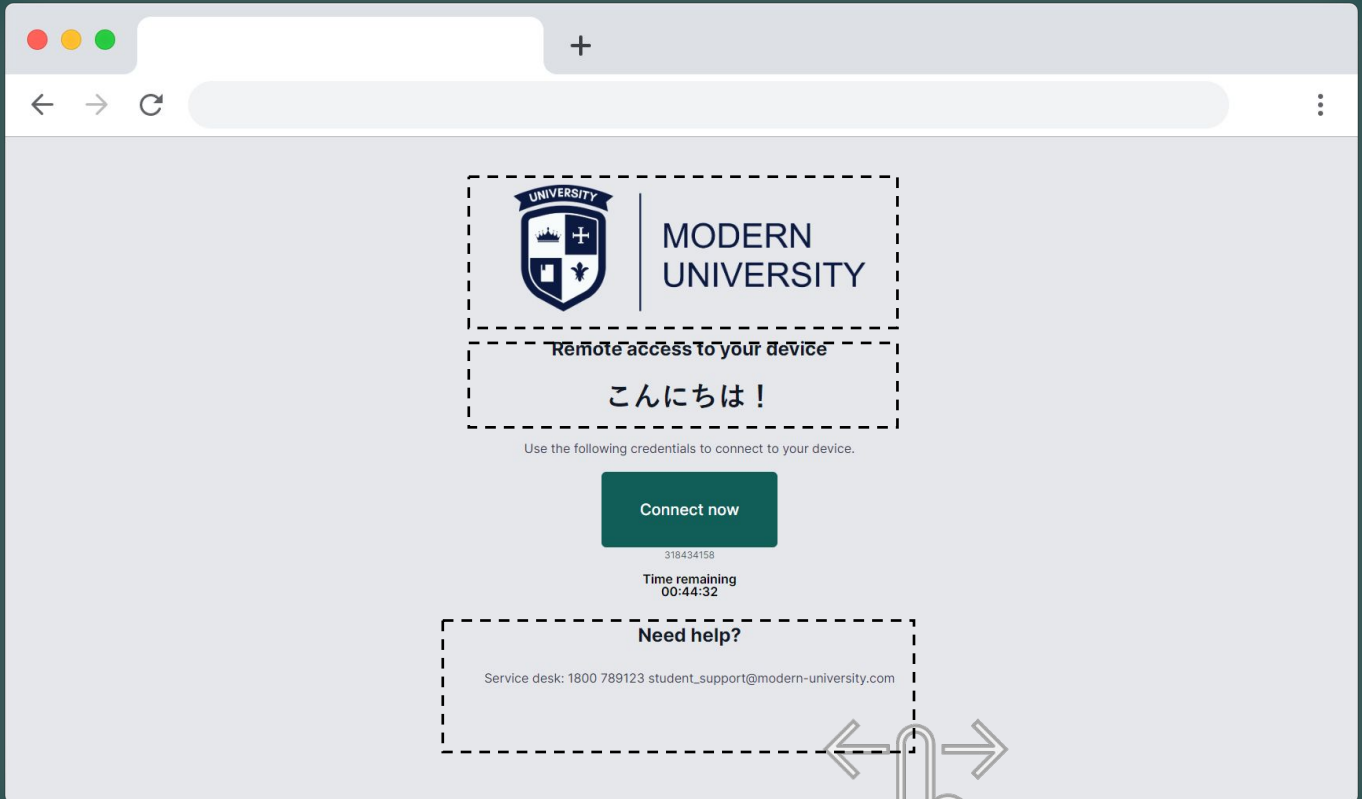


The screenshot displays the AnyClassroom interface for device management. The top navigation bar shows 'LCO Academy - 09:39:16 PM' and 'My Academy'. The left sidebar contains navigation options: Classrooms, Devices, Groups, Students, Statistics, Users, and Settings. The main content area is titled 'DEVICES' and includes a search bar and a 'Filter' dropdown. Two device cards are shown: 'AONE' (offline) and 'VM1' (online). A modal window is open over the 'VM1' device, showing its status as 'Online' and 'License found'. Below the modal, the 'VM1' details page is visible, featuring a 'Device ID' of 318434158 and a 'Connect now' button. The page also includes a 'Latest temporal access' section with a 'View all' button and a 'Create temporal access' button. At the bottom, there is a 'URL DETAILS' section with a long URL and a 'Generated' status.

The device manager offers status reports and immediate remote access for the administrators.

Main features

Customizable access page



Use your own logo and information for the access page for the students.

AnyClassroom is a web application that allows you to manage remote access to on-campus devices, specially designed to allow students to connect to devices in university computer rooms (computer labs). AnyClassroom uses HopToDesk technology to establish the remote connections.

System requirements

Campus workstations

AnyClassroom Works with any Windows or Mac, with HopToDesk 1.4.7

Management

100% web. Works with any modern browser.

Student devices

AnyClassroom Works with any Windows or Mac, with HopToDesk 1.4.7

Connectivity

Any internet connection is suitable.

Bandwidth consumption: min 0.192Mbps / connection.

Main features

AnyClassroom (web application)

- Scheduled remote access.
- Automatic sesión close.
- Web app or API booking.
- Emailed access credentials.
- Unlimited virtual classrooms (device group).
- Manager and monitor roles.
- Overlap booking control.
- Customizable Access page.
- 5, 3 and 1 minute warning before connection close.
- Integration API available.

HopToDesk

- Can connect to Windows or Mac devices.
- Can connect from Windows or Mac, iOS devices.
- Unlimited connection time.
- Up to 60fps.
- Privacy mode.
- Encrypted connections.
- Clipboard.
- File transfer.



www.anyclassroom.com